



MICRO COMPONENT SYSTEM

UX-N1S

—Consists of CA-UXN1S and SP-UXN1S

UX-N1W

—Consists of CA-UXN1W and SP-UXN1W



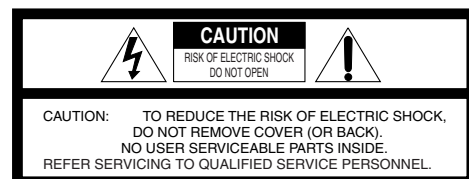
INSTRUCTIONS

GNT0065-015A[J]
0206MOCMDWJSC

©2006 Victor Company of Japan, Limited

For customer use
Enter below the Model No. and Serial No. which are located either on the rear, bottom or side of the cabinet. Retain this information for future reference.
Model No.
Serial No.

Warnings, Cautions and Others Mises en grade, précautions et indications diverses



The lightning flash with arrowhead symbol, within an equilateral triangle is intended to alert the user to the presence of uninsulated "dangerous voltage" within the products enclosure that may be of sufficient magnitude to constitute a risk of electric shock to persons. The exclamation point within an equilateral triangle is intended to alert the user to the presence of important operating and maintenance (servicing) instructions in the literature accompanying the appliance.

WARNING: TO REDUCE THE RISK OF FIRE OR ELECTRIC SHOCK, DO NOT EXPOSE THIS APPLIANCE TO RAIN OR MOISTURE.

Note to CATV system installer:
This reminder is provided to call the CATV system installer's attention to Section 820-40 of the NEC which provides guidelines for proper grounding and, in particular, specifies that the cable ground shall be connected to the grounding system of the building, as close to the point of cable entry as practical.

For U.S.A.
This equipment has been tested and found to comply with the limits for a Class B digital device, pursuant to part 15 of the FCC Rules.
These limits are designed to provide reasonable protection against harmful interference in a residential installation. This equipment generates, uses and can radiate radio frequency energy and, if not installed and used in accordance with the instructions, may cause harmful interference to radio communications. However, there is no guarantee that interference will not occur in a particular installation. If this equipment does cause harmful interference to radio or television reception, which can be determined by turning the equipment off and on, the user is encouraged to try to correct the interference by one or more of the following measures:
• Reorient or relocate the receiving antenna.
• Increase the separation between the equipment and receiver. Connect the equipment into an outlet on a circuit different from that to which the receiver is connected.
• Consult the dealer or an experienced radio/TV technician for help.

For Canada/pour le Canada
THIS DIGITAL APPARATUS DOES NOT EXCEED THE CLASS B LIMITS FOR RADIO NOISE EMISSIONS FROM DIGITAL APPARATUS AS SET OUT IN THE INTERFERENCE-CAUSING EQUIPMENT STANDARD ENTITLED "DIGITAL APPARATUS," ICES-003 OF THE DEPARTMENT OF COMMUNICATIONS.
CET APPAREIL NUMERIQUE RESPECTE LES LIMITES DE BRUITS RADIOELECTRIQUES APPLICABLES AUX APPAREILS NUMERIQUES DE CLASSE B PRESCRITES DANS LA NORME SUR LE MATERIEL BROUILLEUR, "APPAREILS NUMERIQUES," NMB-003 EDICTEE PAR LE MINISTRE DES COMMUNICATIONS.

CAUTION
Changes or modifications not approved by JVC could void the user's authority to operate the equipment.

ATTENTION
Des changements ou modifications non approuvés par JVC pourraient invalider l'autorité de l'utilisateur à opérer cet appareil.

[European Union only]
[Union européenne seulement]

CAUTION
To reduce the risk of electrical shocks, fire, etc.:
1. Do not remove screws, covers or cabinet.
2. Do not expose this appliance to rain or moisture.

ATTENTION
Afin d'éviter tout risque d'électrocution, d'incendie, etc.:
1. Ne pas enlever les vis ni les panneaux et ne pas ouvrir le coffret de l'appareil.
2. Ne pas exposer l'appareil à la pluie ni à l'humidité.

Caution — 0/I button!
Disconnect the mains plug to shut the power off completely. When installing the apparatus, ensure that the plug is easily accessible. The 0/I button in any position does not disconnect the mains line. The power can be remote controlled.
• When the unit is on standby, the STANDBY lamp lights red.
• When the unit is turned on, the STANDBY lamp goes off.

Attention—Touche 0/I!
Déconnectez la fiche secteur pour mettre l'appareil complètement hors tension. Lors de l'installation de l'appareil, assurez-vous que la fiche soit facilement accessible. La touche dans n'importe quelle position ne déconnecte pas l'appareil du secteur. L'alimentation ne peut pas être commandée à distance.
• Quand l'appareil est en mode d'attente, le témoin STANDBY est allumé en rouge.
• Quand l'appareil est sous tension, le témoin STANDBY s'éteint.

IMPORTANT FOR LASER PRODUCTS
1. CLASS 1 LASER PRODUCT
2. **CAUTION:** Do not open the top cover. There are no user serviceable parts inside the System; leave all servicing to qualified service personnel.
3. **CAUTION:** Visible and/or invisible class 1M laser radiation when open. Do not view directly with optical instruments.

IMPORTANT POUR PRODUITS LASER
1. PRODUIT LASER CLASSE 1
2. **ATTENTION:** N'ouvrez pas le couvercle supérieur. Il n'y a aucune pièce réparable par l'utilisateur à l'intérieur de l'appareil; confiez toute réparation à un personnel qualifié.
3. **ATTENTION:** Rayonnement laser visible et/ou invisible de classe 1M une fois ouvert. Ne pas regarder directement avec des instruments optiques.

About the cooling fan
A cooling fan is mounted on the rear panel of the unit to prevent abnormal temperature inside the unit, thus assuring normal operation of the unit.

À propos du ventilateur de refroidissement
Un ventilateur de refroidissement se trouve sur le panneau arrière de l'appareil afin d'éviter la création d'une température anormale à l'intérieur de l'appareil et permettre ainsi un fonctionnement normal de l'appareil.

The model information is located on the bottom.
Les informations sur le modèle sont situées sous l'appareil.

Precautions

Notes on the power cord
• When you are away on travel or otherwise for an extended period of time, remove the plug from the wall outlet. A small amount of power (3.5 W) is always consumed while the power cord is connected to the wall outlet.
• When unplugging the System from the wall outlet, always pull the plug, not the power cord.
• Do not handle the power cord with wet hands.
• Disconnect the power cord before cleaning the System or moving the System.
• Do not alter, twist or pull the power cord, or put anything heavy on it, which may cause fire, electric shock, or other accidents.
• If the cord is damaged, consult a dealer and have the power cord replaced with a new one.

Avoid moisture, water, dust, and high temperatures
• Do not place the System in moist or dusty places.
• If water gets inside the System, turn off the power and remove the plug from the wall outlet, then consult your dealer. Using the System in this state may cause a fire or electrical shock.
• Do not expose the System to direct sunlight or place it near a heating device.

Notes on installation
• Select a place which is level, dry and neither too hot nor too cold between 5°C (41°F) and 35°C (95°F).
• Do not install the System in a place subject to vibrations.
• Do not put heavy objects on the System.

To prevent malfunction or damage of the System
• Do not insert any metallic objects, such as wires, hairpins, coins, etc. into the System.
• Do not block the vents.

To clean the cabinet
• Use a soft cloth. Follow the relevant instructions on the use of chemically-coated cloths.
• Do not use benzene, thinner or other organic solvents and disinfectants. These may cause deformation or discoloring.

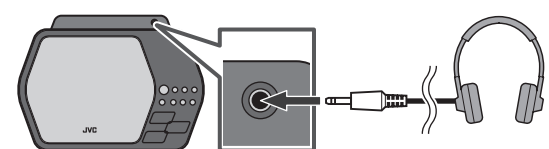
There are no user-serviceable parts inside.
If anything goes wrong, unplug the power cord and consult your dealer.

Basic and Common Operations

Operating on the System

To	Press
Turn on or off (standby) the power	The standby lamp on the System turns off/on.
Select a source*	See "Playing Back Discs" on page 4.
	See "Listening to FM and AM Broadcasts" on page 5.
	See "Connecting a Portable Audio Device" on page 6.
Adjust the volume	You can adjust the volume level from level 0 (VOL MIN) to level 31 (VOL MAX).

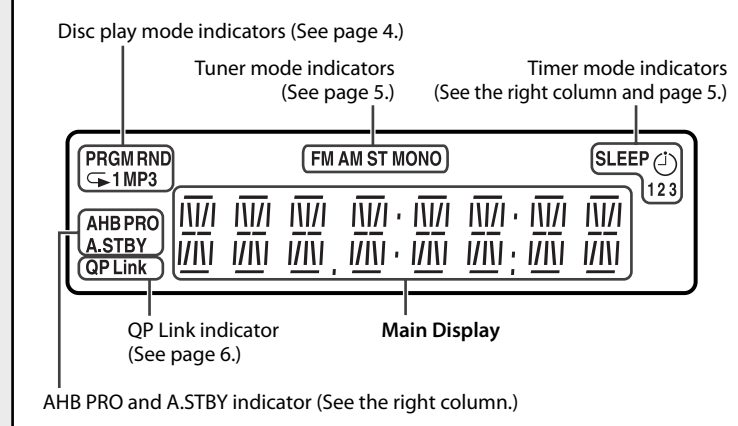
Using Headphones
Be sure to turn down the volume before connecting or wearing the headphones.
• Connecting the headphones will deactivate the speakers.



* You can operate the source select buttons on the System only touch lightly, because these buttons are "touch sensor panel." If you touch any one of these buttons, they lights in blue briefly.

NOTE
DO NOT turn off (standby) the System with the volume set to an extremely high level; Otherwise, the sudden blast of sound can damage your hearing, speakers and/or headphones when you turn on the System or start playback.

Display Information



Operating on the Remote Control

To	Press
Turn on or off (standby) the power	The standby lamp on the System turns off/on.
Select a source	See "Playing Back Discs" on page 4.
	See "Listening to FM and AM Broadcasts" on page 5.
	See "Connecting a Portable Audio Device" on page 6.
Adjust the volume	You can adjust the volume level from level 0 (VOL MIN) to level 31 (VOL MAX).
Drop the volume in a moment	To restore the volume, press again, or adjust the volume level.
Reinforce the bass sound	A/HB PRO indicator appears on the display. To cancel this function, press again.
Adjust the tone (Bass/Treble)	Press once to adjust the bass level or press twice to adjust the treble level. Then press VOLUME + to increase the level or press VOLUME - to decrease it. • You can adjust the bass and treble level from -3 to +3.
Changing the display brightness	Press when the System is turned on. To cancel this function, press again.
Set the SAVE mode	Press and hold for more than 2 seconds when the System is on standby. To cancel this function, press and hold for more than 2 seconds again. • Setting the SAVE mode allows you to reduce power consumption by turning the display off while on standby.
Changing the display information (Clock and Source)	Press briefly (except for FM mode). For setting the clock, see page 5.
Turn off the System automatically after CD playback is over (AUTO STANDBY function)	Press and hold until ASTBY indicator appears on the display. To cancel this function, press and hold again. • If no operation is done for about 3 minutes after CD playback stops, the System turns off.
Turn off the System by using the sleep timer	Press briefly and repeatedly to specify the time (in minutes) as follows: 10 → 20 → 30 → 60 → 90 → 120 → 150 Canceled

Getting Started

Supplied Accessories

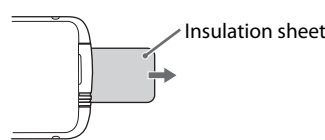
After unpacking, check to be sure that you have all the following items. The number in parentheses indicates the quantity of each piece supplied.

- Remote control (x 1)
- Lithium coin battery CR2025 (x 1) (The battery has been installed when shipped from the factory.)
- AM loop antenna (x 1)
- FM antenna (x 1)

If anything is missing, consult your dealer immediately.

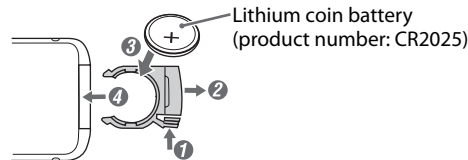
Prepare the Remote Control

When you use the remote control for the first time, pull out the insulation sheet.



Replacing the Battery in the Remote Control

Insert the battery into the remote control by matching the polarity (+ and -) correctly.



NOTES

- Store the battery in a place where children cannot reach. If a child accidentally swallows the battery, consult a doctor immediately.
- Do not recharge, short, disassemble or heat the battery or dispose of it in a fire. Doing any of these things may cause the battery to give off heat, crack, or start a fire.
- Do not leave the battery with other metallic materials. Doing this may cause the battery to give off heat, crack, or start a fire.
- When throwing away or saving the battery, wrap it in tape and insulate; otherwise, the battery may start to give off heat, crack, or start a fire.
- Do not poke the battery with tweezers or similar tools. Doing this may cause the battery to give off heat, crack, or start a fire.
- Dispose of battery in the proper manner, according to federal, state, and local regulations.

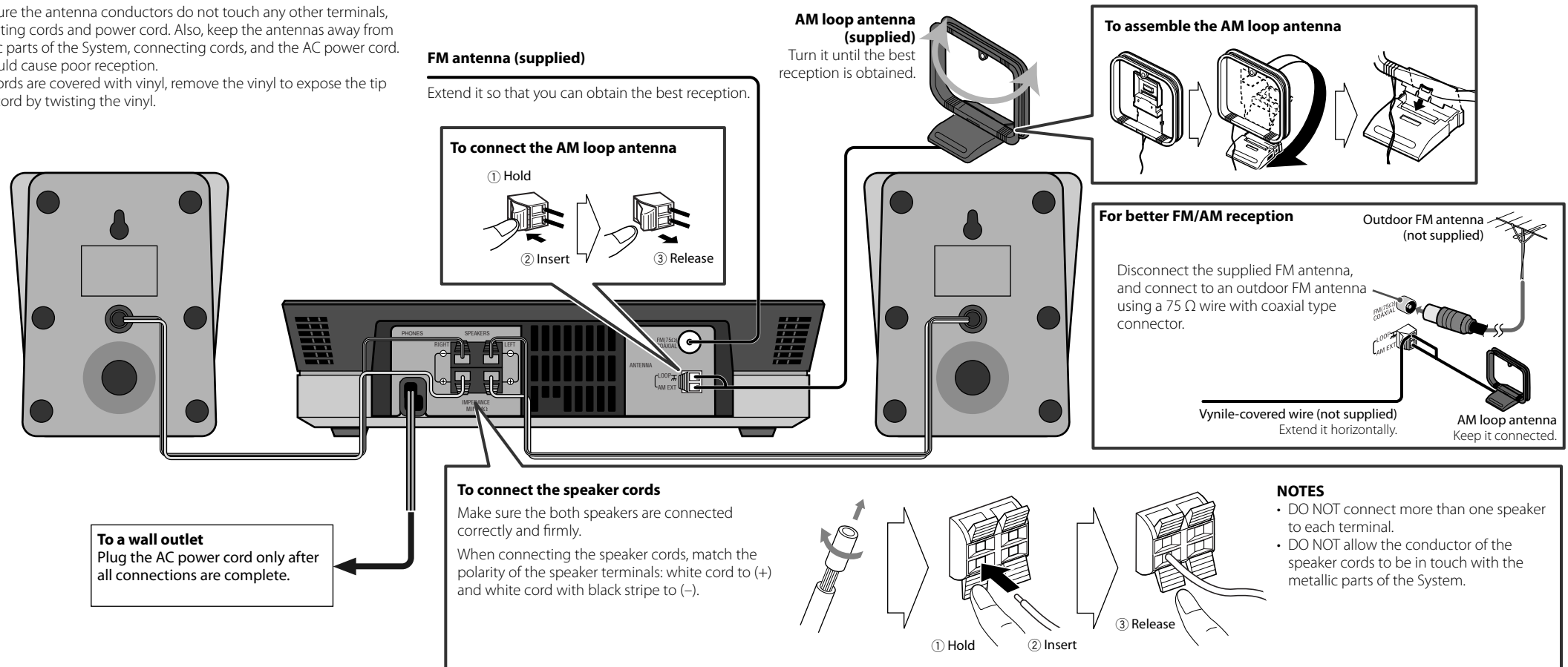
CAUTION:
Danger of explosion if battery is incorrectly replaced. Replace only with the same or equivalent type.

Connections

Do not connect the AC power cord until all other connections have been made.

NOTES

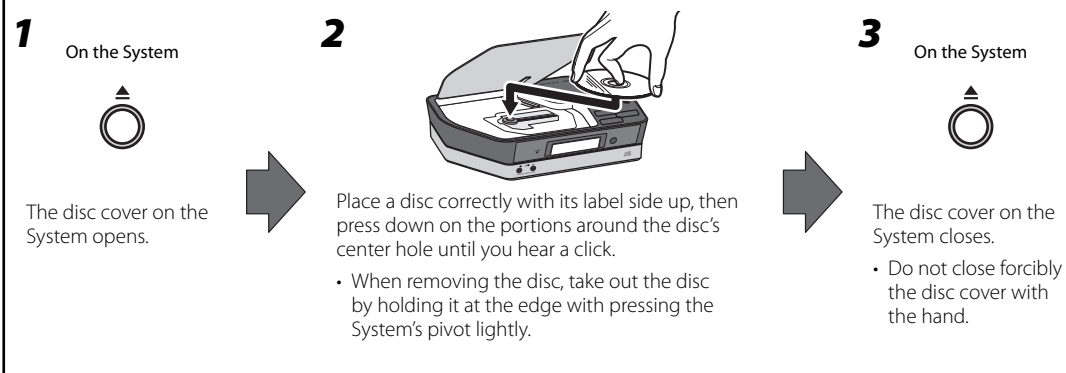
- Make sure the antenna conductors do not touch any other terminals, connecting cords and power cord. Also, keep the antennas away from metallic parts of the System, connecting cords, and the AC power cord. This could cause poor reception.
- If the cords are covered with vinyl, remove the vinyl to expose the tip of the cord by twisting the vinyl.



Playing Back Discs

This System can play back the following discs—regular CD and CD-R/CD-RW (recorded either in the audio CD or MP3 format).
• When playing back the MP3 track, MP3 indicator appears on the display.

To Set a Disc

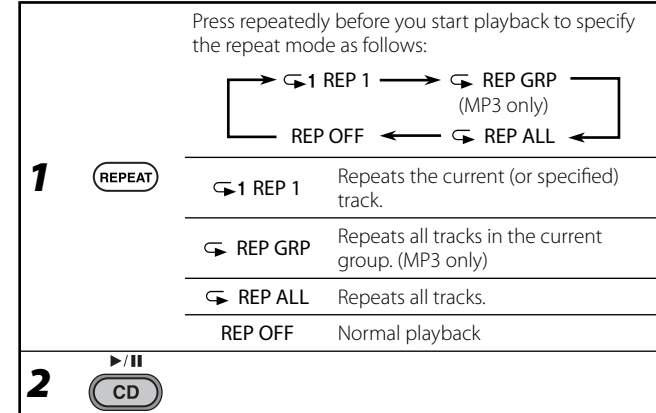


Basic Disc Operations

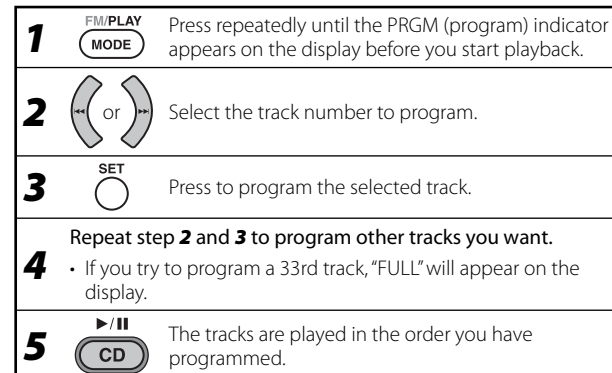
To	On the System	On the remote	Press
Playback the disc			Current track number and elapsed playing time appear on the main display. • During playback, press again to stop playing for a moment.
Stop playback			• While playback is stopped, total track number and total playing time (for MP3 disc, group number and track number) appear on the main display.
Select a track			Increases the track numbers. Decreases the track numbers.
Select a group (MP3 only)			Increases the group numbers while playback is stopped. Decreases the group numbers while playback is stopped.
Forward search / Reverse search			Fast-forwards the track by pressing briefly. To stop searching, press . Fast-reverses the track by pressing briefly. To stop searching, press .

NOTES
• If the disc cannot be read correctly (because it is scratched, for example) or an unreadable CD-R or CD-RW is loaded, playback will not start.
• If no disc is inserted, "NO DISC" appears on the main display.

Playing Repeatedly—Repeat Play



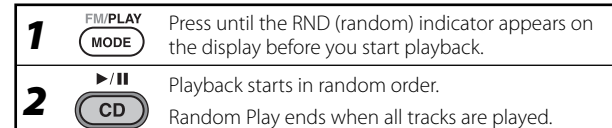
Programming the Playing Order—Program Play (except for MP3)



Operations on the Program Play Mode

To	Press
Check the programmed contents	Press while playback is stopped.
To erase the last step	
To erase the entire program	Press while playback is stopped.
To exit from program play	Press twice while playback is stopped to exit from the program play. • The stored program is erased.

Playing at Random—Random Play



Operations on the Random Play Mode

To	Press
To skip a track	does not work.
To exit from random play	Press once while playback is stopped to exit from the random play.

Listening to FM and AM Broadcasts

Basic Tuner Operations

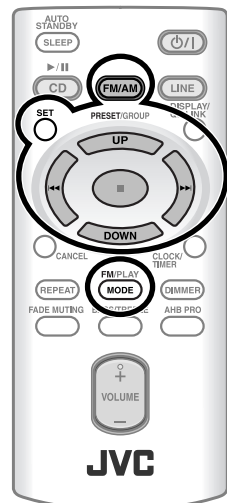
To	Press	
	On the System	On the remote
Select FM or AM		
Select a frequency		
Tune in to a preset station	—	
Change the FM reception mode (When an FM stereo broadcast is hard to receive or noisy)	—	

Presetting Stations

You can preset 30 FM and 15 AM stations manually.

1		Press to activate the preset number entry mode.
2		Press to select a preset number for the station you store.
3		Press to store the station.

NOTE
When you unplug the AC power cord or if a power failure occurs, the preset stations will be erased in two days.



Setting the Clock and Daily Timer

Setting the Clock

Without setting the built-in clock, you cannot use Daily Timer and Sleep Timer.

1		Press to activate the clock setting mode.
2		Adjust the hour, then the minute.

- To exit from the clock setting, press CLOCK/TIMER as required.
- To go back to the previous step, press CANCEL.

Setting the Daily Timer

- Using Daily Timer, you can wake up with your favorite music.
- You can store three Daily Timer settings; however, you can activate only one of Daily Timers at the same time.

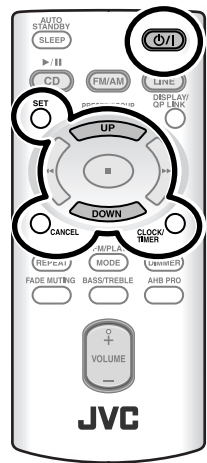
1		Press repeatedly to select one of the timer setting modes you want to set—Daily 1 ON time, Daily 2 ON time, or Daily 3 ON time—as follows:
2		Adjust the hour then the minute for on-time.
3		Turn off the System (on standby).

- To exit from the timer setting, press CLOCK/TIMER as required.
- To correct a misentry during the process, press CANCEL. You can return to the previous step.

To turn off the Daily Timer

1		Press repeatedly to select "Daily 1," "Daily 2," or "Daily 3."
2		

To turn on the Daily Timer again, select one of the timer settings by pressing CLOCK/TIMER, then press SET.



Learning More about This System

Basic and Common Operations (see page 3)

- Sound adjustments also affect the sound through the headphones.
- Sound adjustments do not affect recording to the external device.
- You can set the clock and daily timer while the SAVE mode is turned on. While setting the clock or daily timer, the display is turning on.

Playing Back Discs (see pages 4)

- This System cannot play "packet write" discs.
- For MP3 playback...
 - MP3 discs are required a longer readout time than regular CDs. (It depends on the complexity of the group/file configuration.)
 - Some MP3 files cannot be played back and will be skipped. This result from their recording processes and conditions.
 - When making MP3 discs, use ISO 9660 Level 1 or Level 2 for the disc format.
 - This System can play back MP3 files with the extension code <.mp3> (regardless of the letter case—upper/lower).
 - It is recommended that you make each MP3 file at a sampling rate of 44.1 kHz and at bit rate of 128 kbps. This System cannot play back files made at bit rate of less than 64 kbps.
 - Playback order of MP3 tracks may be different from the one you have intended while recording. If a folder does not include MP3 tracks, they are ignored.
- This System can recognize up to 511 tracks in a disc. Also, the System can recognize up to 150 tracks per group and up to 99 groups in a disc. (for MP3)
 - If there are any unplayable files in a folder, those files are also counted in the total file number.
 - Playable files which do not belong to any groups are handled as Group 1.

MP3 groups/tracks configuration				
This System plays back MP3 tracks as follows.				
Hierarchy				
Level 1	Level 2	Level 3	Level 4	Level 5
ROOT	02	04	05	06
	03	01	08	09
01	Group with its play order			
	MP3 track with its play order			

Troubleshooting

If you are having a problem with your System, check this list for a possible solution before calling for service.

General

Power does not come on.

- Power plug is not inserted securely. Plug in securely.
- Adjustments or settings are suddenly canceled before you finish.
- There is a time limit. Repeat the procedure again.

Operations are disabled.

- The built-in microprocessor may malfunction due to external electrical interference. Unplug the AC power cord and then plug it back in.

Unable to operate the System from the remote control.

- The path between the remote control and the remote sensor on the System is blocked.
- The batteries are exhausted.

No sound is heard.

- Speaker connections are incorrect or loose.
- Headphones are connected.

Radio Operations

Hard to listen to broadcasts because of noise.

- Antennas connections are incorrect or loose.
- The AM loop antenna is too close to the System.
- The FM antenna is not properly extended and positioned.

Maintenance

To get the best performance of the System, keep your discs and mechanism clean.

Handling discs

- Remove the disc from its case by holding it at the edge while pressing the center hole lightly.
- Do not touch the shiny surface of the disc, or bend the disc.
- Put the disc back in its case after use.
- Be careful not to scratch the surface of the disc when placing it back in its case.
- Avoid exposure to direct sunlight, temperature extremes, and moisture.

To clean the disc:

Wipe the disc with a soft cloth in a straight line from center to edge.

Disc Operations

The disc does not play.

- The disc is placed upside down. Place the disc with the label side up.
- MP3 disc is recorded with the "packet writing (UDF file)." It cannot be played.
- Check the files you want to play back.

ID3 Tag on an MP3 disc cannot be shown.

- There are two types of ID3 Tag—Version 1 and Version 2. This System can only show ID3 Tag Version 1.

MP3 groups and tracks are not played back as you expect.

- The playing order is determined when the disc was recorded. It depends on the writing application.

The disc sound is discontinuous.

- The disc is scratched or dirty.
- The disc tray does not open or close.
- The AC power cord is not plugged in.

Timer Operations

Daily Timer does not work.

- The System has been turned on when the on-time comes. Timer starts working only when the System is turned off.

Cleaning the System

- Stains should be wiped off with a soft cloth. If the System is heavily stained, wipe it with a cloth soaked in water-diluted neutral detergent and wrung well, then wipe clean with a dry cloth.
- Since the System may deteriorate in quality, become damaged or get its paint peeled off, be careful about the following:
 - DO NOT wipe it with a hard cloth.
 - DO NOT wipe it strong.
 - DO NOT wipe it with thinner or benzine.
 - DO NOT apply any volatile substance such as insecticides to it.
 - DO NOT allow any rubber or plastic to remain in contact for a long time.

Connecting a Portable Audio Device

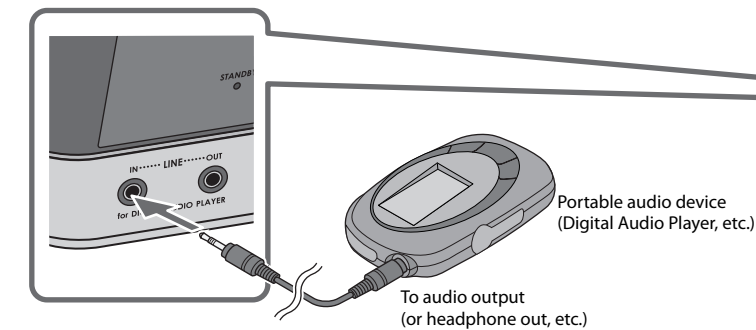
This System has LINE IN/OUT jacks to connect a portable audio device.

Connect between the device and the System by using the stereo mini plug cord (not supplied).

IMPORTANT:

It should be noted that it may be unlawful to re-record pre-recorded tapes, records, or discs without the consent of the owner of copyright in the sound or video recording, broadcast or cable programme and in any literary, dramatic, musical, or artistic embodied therein.

Playing back a portable audio device



1		"LINE" appears on the main display.
2		Start playing the device connected.
3		Adjust the volume level to the level you want to listen to.

To Adjust the Audio Input Level

If the sound from the device connected to the LINE IN jack is too loud or too quiet, you can change the audio input level through the LINE IN jack (without changing the volume level).

On the remote		Press and hold for more than 2 seconds while "LINE" is selected as a source. You can select one of three levels alternately.
----------------------	--	--

To Play Back a Portable Audio Device Easily

By using QP Link (Quick Portable Link), you can easily start playing back a portable audio device connected to the LINE IN jack.

On the remote		Press and hold for more than 2 seconds to activate QP Link. QP Link indicator appears on the display. To cancel this function, press and hold for more than 2 seconds again.
----------------------	--	--

When QP Link is activated, connecting a portable device to the LINE IN jack and starting playback performs the following:

- While listening to another source...
 - Changes the source to "LINE" automatically. (If you change from "LINE" to another source, QP Link will be canceled.)
- While the System is on standby...
 - Turns on the System and changes the source to "LINE" automatically (except when the display is turned off).

NOTE

See "Learning More about This System" on page 7.

5

7

Specifications Specifications and appearance are subject to change without prior notice.

Amplifier section

OUTPUT POWER:

13 W (6.5 W + 6.5 W) at 4 Ω (10% THD)

Speakers/Impedance: 4 Ω – 16 Ω

Audio Input LINE IN: 500 mV/47 kΩ (at "LINE IN LVL1")

250 mV/47 kΩ (at "LINE IN LVL2")

125 mV/47 kΩ (at "LINE IN LVL3")

Audio Output LINE OUT: 1.0 Vrms (10 kΩ) (at "LINE OUT LVL1")

2.0 Vrms (10 kΩ) (at "LINE OUT LVL2")

Tuner section

FM Tuning range: 87.5 MHz - 108.0 MHz

AM Tuning range: 530 kHz - 1 710 kHz

CD player section

Dynamic range: 88 dB

Signal-to-noise ratio: 93 dB

Wow and flutter: Immeasurable

Speakers

Speaker units: 8 cm (3-1/16 inch) cone x 1

Impedance: 4 Ω

Dimensions (approx.): 130 mm x 171 mm x 136 mm (W/H/D)

(5-1/8 inch x 6-3/4 inch x 5-3/8 inch)

Mass (approx.): 0.75 kg (1.7 lbs) each

Supplied Accessories

See page 2.

General

Power requirements: AC 120 V ~, 60 Hz

Power consumption:

21.0 W (POWER ON), 3.5 W (STANDBY mode)

3.0 W or less (SAVE mode)

Mass: 1.8 kg (4.0 lbs)

Dimensions (W x H x D): 270 mm x 68.5 mm x 203 mm

(10-11/16 inch x 2-3/4 inch x 8 inch)

TO OUR VALUED CUSTOMER

THANK YOU FOR PURCHASING THIS JVC PRODUCT.

WE WANT TO HELP YOU ACHIEVE A PERFECT EXPERIENCE.

**NEED HELP ON HOW TO HOOK UP?
NEED ASSISTANCE ON HOW TO OPERATE?
NEED TO LOCATE A JVC SERVICE CENTER?
LIKE TO PURCHASE ACCESSORIES?**

JVC® IS HERE TO HELP!
TOLL FREE: 1(800)252-5722
<http://www.jvc.com>

Remember to retain your Bill of Sale for Warranty Service.

Do not attempt to service the product yourself

Caution

To prevent electrical shock, do not open the cabinet.

There are no user serviceable parts inside.

Please refer to qualified service personnel for repairs.

BT-51018-4
(0204)

8

6

JVC® LIMITED WARRANTY AUDIO-1 [USA ONLY]
[ONLY FOR PRODUCT PURCHASED IN U.S.A.]
 JVC COMPANY OF AMERICA (JVC) warrants this product and all parts thereof, except as set forth below ONLY TO THE ORIGINAL RETAIL PURCHASER to be FREE FROM DEFECTIVE MATERIALS AND WORKMANSHIP from the date of original purchase for the period shown below. ("The Warranty Period")

PARTS	1 YR	LABOR	1 YR
-------	------	-------	------

THIS LIMITED WARRANTY IS VALID ONLY IN THE FIFTY (50) UNITED STATES, THE DISTRICT OF COLUMBIA AND IN THE COMMONWEALTH OF PUERTO RICO.
WHAT WE WILL DO:
 * If this product is found to be defective within the warranty period, JVC will repair or replace defective parts with new or rebuilt equivalents at no charge to the original owner. Such repair and replacement services shall be rendered by JVC during normal business hours at JVC authorized service centers. Parts used for replacement are warranted only for the remainder of the Warranty Period. All products may be brought to a JVC authorized service center on a carry-in basis. Color televisions with a screen size of 27" or greater qualify for in-home service. In such cases, a technician will come to your home and either repair the TV there or remove and return it if it cannot be repaired in your home.
WHAT YOU MUST DO FOR WARRANTY SERVICE:
 * Please do not return your product to the retailer.
 * Instead, return your product to the JVC authorized service center nearest you. If shipping the product to the service center, please be sure to package it carefully, preferably in the original packaging, and include a brief description of the problem(s). Please call 1-800-252-5722 to locate the nearest JVC authorized service center. Service locations can also be obtained from our website <http://www.jvc.com>. If your product qualifies for in-home service, the service representative will require clear access to the product.
 * If you have any questions concerning your JVC Product, please contact our Customer Relations Department at 800-252-5722.
WHAT IS NOT COVERED:
 * This limited warranty provided by JVC does not cover:
 * Products which have been subject to abuse, accident, alteration, modification, tampering, negligence, misuse, faulty installation, lack of reasonable care, or if repaired or serviced by anyone other than a service facility authorized by JVC to render such service, or if affixed to any attachment not provided with the products, or if the model or serial number has been altered, tampered with, defaced or removed;
 * Initial installation, installation and removal from cabinets or mounting systems.
 * Operational adjustments covered in the Owner's Manual, normal maintenance, video and audio head cleaning;
 * Damage that occurs in shipment, due to act of God, and cosmetic damage;
 * Signal reception problems and failures due to line power surge;
 * Video Pick-up Tubes/CCD Image Sensors are covered for 90 days from the date of purchase;
 * Accessories;
 * Batteries (except that Rechargeable Batteries are covered for 90 days from the date of purchase);
 * Products used for commercial purposes, including, but not limited to rental.
 * There are no express warranties except as listed above.
 * THE DURATION OF ANY IMPLIED WARRANTIES, INCLUDING THE IMPLIED WARRANTY OF MERCHANTABILITY, IS LIMITED TO THE DURATION OF THE EXPRESS WARRANTY HEREIN.
 * JVC SHALL NOT BE LIABLE FOR ANY LOSS OF USE OF THE PRODUCT, INCONVENIENCE, OR ANY OTHER DAMAGES, WHETHER DIRECT, INCIDENTAL OR CONSEQUENTIAL (INCLUDING, WITHOUT LIMITATION, DAMAGE TO TAPES, RECORDS OR DISCS) RESULTING FROM THE USE OF THIS PRODUCT, OR ARISING OUT OF ANY BREACH OF THIS WARRANTY. ALL EXPRESS AND IMPLIED WARRANTIES, INCLUDING THE WARRANTIES OF MERCHANTABILITY AND FITNESS FOR PARTICULAR PURPOSE, ARE LIMITED TO THE WARRANTY PERIOD SET FORTH ABOVE.
 * Some states do not allow the exclusion of incidental or consequential damages or limitations on how long an implied warranty lasts, so these limitations or exclusions may not apply to you. This warranty gives you specific legal rights and you may also have other rights which vary from state to state.

 JVC COMPANY OF AMERICA 1700 Valley Road
 DIVISION OF JVC AMERICAS CORP. Wayne, NJ 07470
<http://www.jvc.com>

 REFURBISHED PRODUCTS CARRY A SEPARATE WARRANTY. THIS WARRANTY DOES NOT APPLY. FOR DETAIL OF REFURBISHED PRODUCT WARRANTY, PLEASE REFER TO THE REFURBISHED PRODUCT WARRANTY INFORMATION PACKAGED WITH EACH REFURBISHED PRODUCT.
For customer use:
 Enter below the Model No. and Serial No. which is located either on the rear, bottom or side of the cabinet. Retain this information for future reference.

Model No. :	Serial No. :
Purchase date :	Name of dealer :



MICRO COMPONENT SYSTEM

UX-N1S

—Consists of CA-UXN1S and SP-UXN1S

UX-N1W

—Consists of CA-UXN1W and SP-UXN1W



INSTRUCTIONS

GNT0065-016A/CJ
0206MOCMDWJSC
©2006 Victor Company of Japan, Limited

Warnings, Cautions and Others Mises en grade, précautions et indications diverses

CAUTION
RISK OF ELECTRIC SHOCK
DO NOT OPEN

CAUTION: TO REDUCE THE RISK OF ELECTRIC SHOCK, DO NOT REMOVE COVER (OR BACK). NO USER-SERVICEABLE PARTS INSIDE. REFER SERVICING TO QUALIFIED SERVICE PERSONNEL.

The lightning flash with arrowhead symbol, within an equilateral triangle is intended to alert the user to the presence of uninsulated "dangerous voltage" within the products enclosure that may be of sufficient magnitude to constitute a risk of electric shock to persons. The exclamation point within an equilateral triangle is intended to alert the user to the presence of important operating and maintenance (servicing) instructions in the literature accompanying the appliance.

WARNING: TO REDUCE THE RISK OF FIRE OR ELECTRIC SHOCK, DO NOT EXPOSE THIS APPLIANCE TO RAIN OR MOISTURE.

Note to CATV system installer:
This reminder is provided to call the CATV system installer's attention to Section 820-40 of the NEC which provides guidelines for proper grounding and, in particular, specifies that the cable ground shall be connected to the grounding system of the building, as close to the point of cable entry as practical.

For U.S.A.
This equipment has been tested and found to comply with the limits for a Class B digital device, pursuant to part 15 of the FCC Rules.
These limits are designed to provide reasonable protection against harmful interference in a residential installation. This equipment generates, uses and can radiate radio frequency energy and, if not installed and used in accordance with the instructions, may cause harmful interference to radio communications. However, there is no guarantee that interference will not occur in a particular installation. If this equipment does cause harmful interference to radio or television reception, which can be determined by turning the equipment off and on, the user is encouraged to try to correct the interference by one or more of the following measures:
Reorient or relocate the receiving antenna.
Increase the separation between the equipment and receiver. Connect the equipment into an outlet on a circuit different from that to which the receiver is connected. Consult the dealer or an experienced radio/TV technician for help.

For Canada/pour le Canada
THIS DIGITAL APPARATUS DOES NOT EXCEED THE CLASS B LIMITS FOR RADIO NOISE EMISSIONS FROM DIGITAL APPARATUS AS SET OUT IN THE INTERFERENCE-CAUSING EQUIPMENT STANDARD ENTITLED "DIGITAL APPARATUS," ICES-003 OF THE DEPARTMENT OF COMMUNICATIONS.
CET APPAREIL NUMERIQUE RESPECTE LES LIMITES DE BRUITS RADIOELECTRIQUES APPLICABLES AUX APPAREILS NUMERIQUES DE CLASSE B PRESCRITES DANS LA NORME SUR LE MATERIEL BROUILLEUR, "APPAREILS NUMERIQUES", NMB-003 EDICTEE PAR LE MINISTRE DES COMMUNICATIONS.

CAUTION
Changes or modifications not approved by JVC could void the user's authority to operate the equipment.
ATTENTION
Des changements ou modifications non approuvés par JVC pourraient invalider l'autorité de l'utilisateur à opérer cet appareil.

[European Union only]
[Union européenne seulement]

CAUTION
To reduce the risk of electrical shocks, fire, etc.:
1. Do not remove screws, covers or cabinet.
2. Do not expose this appliance to rain or moisture.

ATTENTION
Afin d'éviter tout risque d'électrocution, d'incendie, etc.:
1. Ne pas enlever les vis ni les panneaux et ne pas ouvrir le coffret de l'appareil.
2. Ne pas exposer l'appareil à la pluie ni à l'humidité.

Caution — 0/I button!
Disconnect the mains plug to shut the power off completely. When installing the apparatus, ensure that the plug is easily accessible. The 0/I button in any position does not disconnect the mains line. The power can be remote controlled.
• When the unit is on standby, the STANDBY lamp lights red.
• When the unit is turned on, the STANDBY lamp goes off.

Attention — Touche 0/I!
Déconnectez la fiche secteur pour mettre l'appareil complètement hors tension. Lors de l'installation de l'appareil, assurez-vous que la fiche soit facilement accessible. La touche dans n'importe quelle position ne déconnecte pas l'appareil du secteur. L'alimentation ne peut pas être commandée à distance.
• Quand l'appareil est en mode d'attente, le témoin STANDBY est allumé en rouge.
• Quand l'appareil est sous tension, le témoin STANDBY s'éteint.

IMPORTANT FOR LASER PRODUCTS
1. CLASS 1 LASER PRODUCT
2. **CAUTION:** Do not open the top cover. There are no user serviceable parts inside the System; leave all servicing to qualified service personnel.
3. **CAUTION:** Visible and/or invisible class 1M laser radiation when open. Do not view directly with optical instruments.

IMPORTANT POUR PRODUITS LASER
1. PRODUIT LASER CLASSE 1
2. **ATTENTION:** N'ouvrez pas le couvercle supérieur. Il n'y a aucune pièce réparable par l'utilisateur à l'intérieur de l'appareil; confiez toute réparation à un personnel qualifié.
3. **ATTENTION:** Rayonnement laser visible et/ou invisible de classe 1M une fois ouvert. Ne pas regarder directement avec des instruments optiques.

About the cooling fan
A cooling fan is mounted on the rear panel of the unit to prevent abnormal temperature inside the unit, thus assuring normal operation of the unit.

À propos du ventilateur de refroidissement
Un ventilateur de refroidissement se trouve sur le panneau arrière de l'appareil afin d'éviter la création d'une température anormale à l'intérieur de l'appareil et permettre ainsi un fonctionnement normal de l'appareil.

The model information is located on the bottom.
Les informations sur le modèle sont situées sous l'appareil.

Precautions

Notes on the power cord
• When you are away on travel or otherwise for an extended period of time, remove the plug from the wall outlet. A small amount of power (3.5 W) is always consumed while the power cord is connected to the wall outlet.
• When unplugging the System from the wall outlet, always pull the plug, not the power cord.
• Do not handle the power cord with wet hands.
• Disconnect the power cord before cleaning the System or moving the System.
• Do not alter, twist or pull the power cord, or put anything heavy on it, which may cause fire, electric shock, or other accidents.
• If the cord is damaged, consult a dealer and have the power cord replaced with a new one.

Avoid moisture, water, dust, and high temperatures
• Do not place the System in moist or dusty places.
• If water gets inside the System, turn off the power and remove the plug from the wall outlet, then consult your dealer. Using the System in this state may cause a fire or electrical shock.
• Do not expose the System to direct sunlight or place it near a heating device.

Notes on installation
• Select a place which is level, dry and neither too hot nor too cold between 5°C and 35°C.
• Do not install the System in a place subject to vibrations.
• Do not put heavy objects on the System.

To prevent malfunction or damage of the System
• Do not insert any metallic objects, such as wires, hairpins, coins, etc. into the System.
• Do not block the vents.

To clean the cabinet
• Use a soft cloth. Follow the relevant instructions on the use of chemically-coated cloths.
• Do not use benzene, thinner or other organic solvents and disinfectants. These may cause deformation or discoloring.

There are no user-serviceable parts inside.
If anything goes wrong, unplug the power cord and consult your dealer.

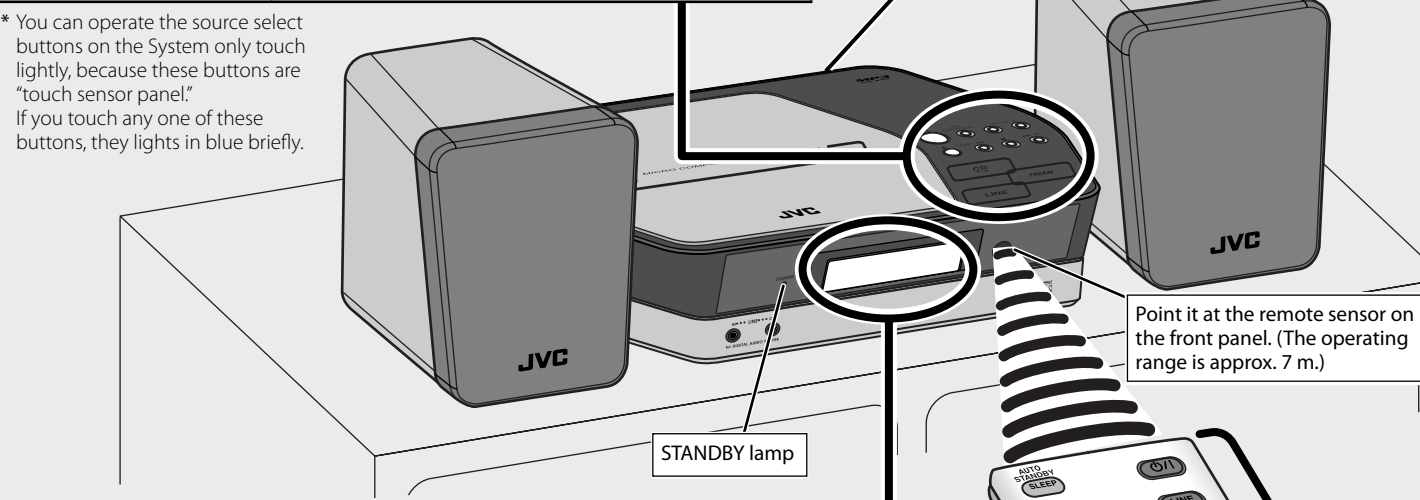
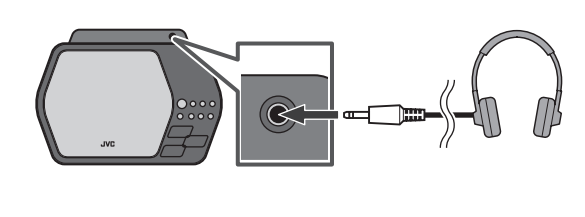
Basic and Common Operations

Operating on the System

To	Press
Turn on or off (standby) the power	The standby lamp on the System turns off/on.
Select a source*	See "Playing Back Discs" on page 4. See "Listening to FM and AM Broadcasts" on page 5. See "Connecting a Portable Audio Device" on page 6.
Adjust the volume	You can adjust the volume level from level 0 (VOL MIN) to level 31 (VOL MAX).

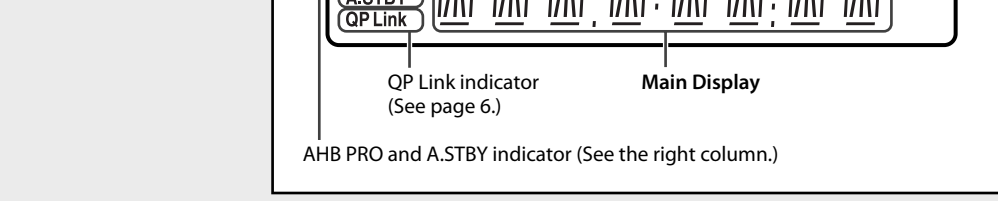
Using Headphones

Be sure to turn down the volume before connecting or wearing the headphones.
• Connecting the headphones will deactivate the speakers.



* You can operate the source select buttons on the System only touch lightly, because these buttons are "touch sensor panel." If you touch any one of these buttons, they lights in blue briefly.

Display Information



Operating on the Remote Control

To	Press
Turn on or off (standby) the power	The standby lamp on the System turns off/on.
Select a source	See "Playing Back Discs" on page 4. See "Listening to FM and AM Broadcasts" on page 5. See "Connecting a Portable Audio Device" on page 6.
Adjust the volume	You can adjust the volume level from level 0 (VOL MIN) to level 31 (VOL MAX).
Drop the volume in a moment	To restore the volume, press again, or adjust the volume level.
Reinforce the bass sound	AHB PRO indicator appears on the display. To cancel this function, press again.
Adjust the tone (Bass/Treble)	Press once to adjust the bass level or press twice to adjust the treble level. Then press VOLUME + to increase the level or press VOLUME - to decrease it. • You can adjust the bass and treble level from -3 to +3.
Changing the display brightness	Press when the System is turned on. To cancel this function, press again.
Set the SAVE mode	Press and hold for more than 2 seconds when the System is on standby. To cancel this function, press and hold for more than 2 seconds again. • Setting the SAVE mode allows you to reduce power consumption by turning the display off while on standby.
Changing the display information (Clock and Source)	Press briefly (except for FM mode). For setting the clock, see page 5.
Turn off the System automatically after CD playback is over (AUTO STANDBY function)	Press and hold until ASTBY indicator appears on the display. To cancel this function, press and hold again. • If no operation is done for about 3 minutes after CD playback stops, the System turns off.
Turn off the System by using the sleep timer	Press briefly and repeatedly to specify the time (in minutes) as follows: 10 → 20 → 30 → 60 → 90 → 120 → 150 Canceled • To check the time remaining until the shut-off time after setting the sleep timer, press SLEEP once.

Getting Started

Supplied Accessories

After unpacking, check to be sure that you have all the following items. The number in parentheses indicates the quantity of each piece supplied.
• Remote control (x 1)
• Lithium coin battery CR2025 (x 1) (The battery has been installed when shipped from the factory.)
• AM loop antenna (x 1)
• FM antenna (x 1)

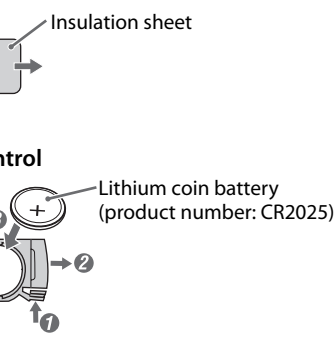
If anything is missing, consult your dealer immediately.

Prepare the Remote Control

When you use the remote control for the first time, pull out the insulation sheet.

Replacing the Battery in the Remote Control

Insert the battery into the remote control by matching the polarity (+ and -) correctly.



NOTES
• Store the battery in a place where children cannot reach. If a child accidentally swallows the battery, consult a doctor immediately.
• Do not recharge, short, disassemble or heat the battery or dispose of it in a fire. Doing any of these things may cause the battery to give off heat, crack, or start a fire.
• Do not leave the battery with other metallic materials. Doing this may cause the battery to give off heat, crack, or start a fire.
• When throwing away or saving the battery, wrap it in tape and insulate; otherwise, the battery may start to give off heat, crack, or start a fire.
• Do not poke the battery with tweezers or similar tools. Doing this may cause the battery to give off heat, crack, or start a fire.
• Dispose of battery in the proper manner, according to federal, state, and local regulations.

CAUTION:
Danger of explosion if battery is incorrectly replaced. Replace only with the same or equivalent type.

Connections

Do not connect the AC power cord until all other connections have been made.

NOTES
• Make sure the antenna conductors do not touch any other terminals, connecting cords and power cord. Also, keep the antennas away from metallic parts of the System, connecting cords, and the AC power cord. This could cause poor reception.
• If the cords are covered with vinyl, remove the vinyl to expose the tip of the cord by twisting the vinyl.

FM antenna (supplied)
Extend it so that you can obtain the best reception.

To connect the AM loop antenna
1 Hold
2 Insert
3 Release

AM loop antenna (supplied)
Turn it until the best reception is obtained.

To assemble the AM loop antenna

For better FM/AM reception
Disconnect the supplied FM antenna, and connect to an outdoor FM antenna using a 75 Ω wire with coaxial type connector.

To connect the speaker cords
Make sure the both speakers are connected correctly and firmly.
When connecting the speaker cords, match the polarity of the speaker terminals: white cord to (+) and white cord with black stripe to (-).

To a wall outlet
Plug the AC power cord only after all connections are complete.

NOTES
• DO NOT connect more than one speaker to each terminal.
• DO NOT allow the conductor of the speaker cords to be in touch with the metallic parts of the System.

Playing Back Discs

This System can play back the following discs—regular CD and CD-R/CD-RW (recorded either in the audio CD or MP3 format).
• When playing back the MP3 track, MP3 indicator appears on the display.

To Set a Disc

1 On the System
 The disc cover on the System opens.

2 Place a disc correctly with its label side up, then press down on the portions around the disc's center hole until you hear a click.
• When removing the disc, take out the disc by holding it at the edge with pressing the System's pivot lightly.

3 On the System
 The disc cover on the System closes.

Basic Disc Operations

To	On the System	On the remote	Press
Playback the disc			Current track number and elapsed playing time appear on the main display. • During playback, press again to stop playing for a moment.
Stop playback			• While playback is stopped, total track number and total playing time (for MP3 disc, group number and track number) appear on the main display.
Select a track			Increases the track numbers. Decreases the track numbers.
Select a group (MP3 only)			Increases the group numbers while playback is stopped. Decreases the group numbers while playback is stopped.
Forward search / Reverse search			Fast-forwards the track by pressing briefly. To stop searching, press . Fast-reverses the track by pressing briefly. To stop searching, press .

NOTES
• If the disc cannot be read correctly (because it is scratched, for example) or an unreadable CD-R or CD-RW is loaded, playback will not start.
• If no disc is inserted, "NO DISC" appears on the main display.

Playing Repeatedly—Repeat Play

Press repeatedly before you start playback to specify the repeat mode as follows:

1 Press repeatedly before you start playback to specify the repeat mode as follows:
REP OFF ← REP ALL
← 1 REP 1 → REP GRP (MP3 only)
← REP ALL →

2 Press repeatedly before you start playback to specify the repeat mode as follows:
REP OFF ← REP ALL
← 1 REP 1 → REP GRP (MP3 only)
← REP ALL →

Programming the Playing Order—Program Play (except for MP3)

1 Press repeatedly until the PRGM (program) indicator appears on the display before you start playback.

2 Select the track number to program.

3 Press to program the selected track.

4 Repeat step 2 and 3 to program other tracks you want.
• If you try to program a 33rd track, "FULL" will appear on the display.

5 The tracks are played in the order you have programmed.

Operations on the Program Play Mode

To	Press
Check the programmed contents	Press while playback is stopped.
To erase the last step	
To erase the entire program	Press while playback is stopped.
To exit from program play	Press twice while playback is stopped to exit from the program play. • The stored program is erased.

Playing at Random—Random Play

1 Press until the RND (random) indicator appears on the display before you start playback.

2 Playback starts in random order.
Random Play ends when all tracks are played.

Operations on the Random Play Mode

To	Press
To skip a track	does not work.
To exit from random play	Press once while playback is stopped to exit from the random play.

Listening to FM and AM Broadcasts

Basic Tuner Operations

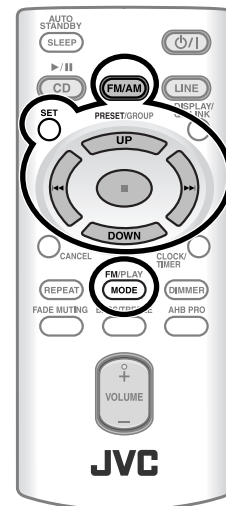
To	Press		
	On the System	On the remote	
Select FM or AM			Each time you press the button, the band alternates between FM and AM. <ul style="list-style-type: none"> "FM" or "AM" and selected frequency appear on the main display. If an FM program is broadcast in stereo, the ST (stereo) indicator lights up on the display (only when the reception is good).
Select a frequency			Press and hold for more than 2 seconds. The System starts searching for stations and stops when a station of sufficient signal strength is tuned in. <ul style="list-style-type: none"> Press during searching to stop. Press repeatedly to change the frequency step by step.
Tune in to a preset station	—		Press to select a preset number for the station you store. <ul style="list-style-type: none"> For presetting stations, see below.
Change the FM reception mode (When an FM stereo broadcast is hard to receive or noisy)	—		Press to improve reception. The MONO indicator appears on the display. Reception will improve though the stereo effect is lost. To restore the stereo effect, press again.

Presetting Stations

You can preset 30 FM and 15 AM stations manually.

1		Press to activate the preset number entry mode. <ul style="list-style-type: none"> Finish the following process while the indication on the display is flashing.
2		Press to select a preset number for the station you store.
3		Press to store the station.

NOTE
When you unplug the AC power cord or if a power failure occurs, the preset stations will be erased in two days.



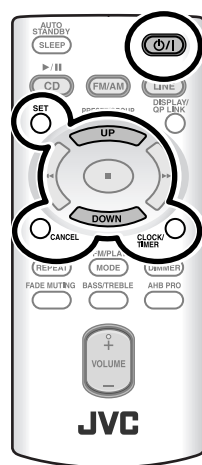
Setting the Clock and Daily Timer

Setting the Clock

Without setting the built-in clock, you cannot use Daily Timer and Sleep Timer.

1		Press to activate the clock setting mode. <ul style="list-style-type: none"> If you have already adjusted the clock before, press the button repeatedly until the clock setting mode is selected.
2		Adjust the hour, then the minute.

- To exit from the clock setting, press CLOCK/TIMER as required.
- To go back to the previous step, press CANCEL.



Setting the Daily Timer

Using Daily Timer, you can wake up with your favorite music.
 You can store three Daily Timer settings; however, you can activate only one of Daily Timers at the same time.

1		Press repeatedly to select one of the timer setting modes you want to set—Daily 1 ON time, Daily 2 ON time, or Daily 3 ON time—as follows:
2		<ol style="list-style-type: none"> Adjust the hour then the minute for on-time. Adjust the hour then the minute for off-time. Select the playback source—"FM/AM," "CD," or "LINE." For "FM/AM": Select a preset channel. Select the volume level. <ul style="list-style-type: none"> You can select the volume level ("VOLUME 0" to "VOLUME 31" and "VOLUME --"). If you select "VOLUME --", the volume is set to the last level when the System is turned off.
3		Turn off the System (on standby).

- To exit from the timer setting, press CLOCK/TIMER as required.
- To correct a misentry during the process, press CANCEL. You can return to the previous step.

To turn off the Daily Timer

1		Press repeatedly to select "Daily 1," "Daily 2," or "Daily 3."
2		

To turn on the Daily Timer again, select one of the timer settings by pressing CLOCK/TIMER, then press SET.

Learning More about This System

Basic and Common Operations (see page 3)

- Sound adjustments also affect the sound through the headphones.
- Sound adjustments do not affect recording to the external device.
- You can set the clock and daily timer while the SAVE mode is turned on. While setting the clock or daily timer, the display is turning on.

Playing Back Discs (see page 4)

- This System cannot play "packet write" discs.
- For MP3 playback...
 - MP3 discs are required a longer readout time than regular CDs. (It depends on the complexity of the group/file configuration.)
 - Some MP3 files cannot be played back and will be skipped. This result from their recording processes and conditions.
 - When making MP3 discs, use ISO 9660 Level 1 or Level 2 for the disc format.
 - This System can play back MP3 files with the extension code <.mp3> (regardless of the letter case—upper/lower).
 - It is recommended that you make each MP3 file at a sampling rate of 44.1 kHz and at bit rate of 128 kbps. This System cannot play back files made at bit rate of less than 64 kbps.
 - Playback order of MP3 tracks may be different from the one you have intended while recording. If a folder does not include MP3 tracks, they are ignored.
- This System can recognize up to 511 tracks in a disc. Also, the System can recognize up to 150 tracks per group and up to 99 groups in a disc. (for MP3)
 - If there are any unplayable files in a folder, those files are also counted in the total file number.
 - Playable files which do not belong to any groups are handled as Group 1.

MP3 groups/tracks configuration				
This System plays back MP3 tracks as follows.				
Hierarchy				
Level 1	Level 2	Level 3	Level 4	Level 5
ROOT	02	04	05	06
	03	10	04	05
	01	01	06	08
01	Group with its play order			
	MP3 track with its play order			

Connecting a Portable Audio Device (see page 6)

Playing back a portable audio device:

- If a component connected to the LINE IN jack is not loud enough, QP Link may not work properly. In such cases, adjust the volume level of the component louder so that the System can detect the sound signal properly.
- Changing from "LINE" to another source while QP Link works will deactivate QP Link temporarily. In this case, the following reactivates QP Link:
 - Pressing QP LINK on the remote control
 - When no sound signal comes from the LINE IN jack for about 30 seconds after the System is turned off
- If you press to turn the System off or if preset Timer turns the System off while QP Link works, the System deactivates QP Link temporarily. In such cases, the following reactivates QP Link:
 - When no sound signal comes from the LINE IN jack for about 30 seconds after the System is turned off
 - When you turn on the power again

Setting the Clock and Daily Timer (see page 5)

- "AM 12:00" will flash on the display until you set the clock.
- The clock may gain or lose 1 to 2 minutes per month. If this happens, readjust the clock.
- When you unplug the AC power cord or if a power failure occurs, the clock and the timer will be canceled. You need to set the clock first, then the timer again.
- If you do not specify the preset station correctly while setting a timer, the currently selected station will be played when the timer is activated.
- If there are any unplayable files in a folder, those files are also counted in the total file number.
- Playable files which do not belong to any groups are handled as Group 1.

Timer Priority:

- If you set the Sleep Timer after Daily Timer starts playing the selected source, Daily Timer is canceled.

Troubleshooting

If you are having a problem with your System, check this list for a possible solution before calling for service.

General

Power does not come on.

- Power plug is not inserted securely. Plug in securely.
- Adjustments or settings are suddenly canceled before you finish.
 - There is a time limit. Repeat the procedure again.

Operations are disabled.

- The built-in microprocessor may malfunction due to external electrical interference. Unplug the AC power cord and then plug it back in.

Unable to operate the System from the remote control.

- The path between the remote control and the remote sensor on the System is blocked.
- The batteries are exhausted.

No sound is heard.

- Speaker connections are incorrect or loose.
- Headphones are connected.

Radio Operations

Hard to listen to broadcasts because of noise.

- Antennas connections are incorrect or loose.
- The AM loop antenna is too close to the System.
- The FM antenna is not properly extended and positioned.

Disc Operations

The disc does not play.

- The disc is placed upside down. Place the disc with the label side up.
- MP3 disc is recorded with the "packet writing (UDF file)." It cannot be played. Check the files you want to play back.
- ID3 Tag on an MP3 disc cannot be shown.
 - There are two types of ID3 Tag—Version 1 and Version 2. This System can only show ID3 Tag Version 1.
- MP3 groups and tracks are not played back as you expect.
 - The playing order is determined when the disc was recorded. It depends on the writing application.
- The disc sound is discontinuous.
 - The disc is scratched or dirty.
- The disc tray does not open or close.
 - The AC power cord is not plugged in.

Timer Operations

Daily Timer does not work.

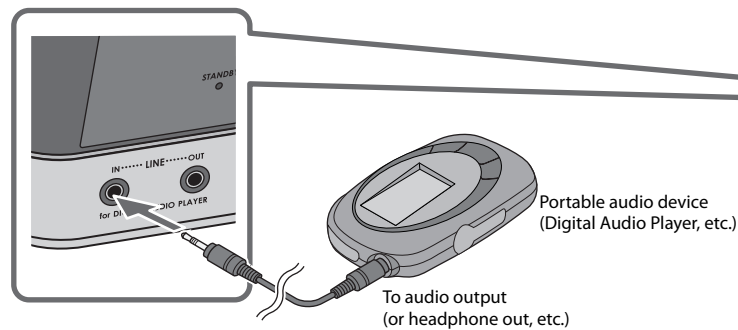
- The System has been turned on when the on-time comes. Timer starts working only when the System is turned off.

Connecting a Portable Audio Device

This System has LINE IN/OUT jacks to connect a portable audio device. Connect between the device and the System by using the stereo mini plug cord (not supplied).

IMPORTANT:
It should be noted that it may be unlawful to re-record pre-recorded tapes, records, or discs without the consent of the owner of copyright in the sound or video recording, broadcast or cable programme and in any literary, dramatic, musical, or artistic embodied therein.

Playing back a portable audio device



1		"LINE" appears on the main display.
2		Start playing the device connected.
3		Adjust the volume level to the level you want to listen to.

To Adjust the Audio Input Level

If the sound from the device connected to the LINE IN jack is too loud or too quiet, you can change the audio input level through the LINE IN jack (without changing the volume level).

On the remote		Press and hold for more than 2 seconds while "LINE" is selected as a source. You can select one of three levels alternately.
---------------	--	--

To Play Back a Portable Audio Device Easily

By using QP Link (Quick Portable Link), you can easily start playing back a portable audio device connected to the LINE IN jack.

On the remote		Press and hold for more than 2 seconds to activate QP Link. QP Link indicator appears on the display. To cancel this function, press and hold for more than 2 seconds again.
---------------	--	--

When QP Link is activated, connecting a portable device to the LINE IN jack and starting playback performs the following:

- While listening to another source... Changes the source to "LINE" automatically. (If you change from "LINE" to another source, QP Link will be canceled.)
- While the System is on standby... Turns on the System and changes the source to "LINE" automatically (except when the display is turned off).

NOTE

See "Learning More about This System" on page 7.

5

Maintenance

To get the best performance of the System, keep your discs and mechanism clean.

Handling discs

- Remove the disc from its case by holding it at the edge while pressing the center hole lightly.
- Do not touch the shiny surface of the disc, or bend the disc.
- Put the disc back in its case after use.
- Be careful not to scratch the surface of the disc when placing it back in its case.
- Avoid exposure to direct sunlight, temperature extremes, and moisture.

To clean the disc:

Wipe the disc with a soft cloth in a straight line from center to edge.

Cleaning the System

- Stains should be wiped off with a soft cloth. If the System is heavily stained, wipe it with a cloth soaked in water-diluted neutral detergent and wrung well, then wipe clean with a dry cloth.
- Since the System may deteriorate in quality, become damaged or get its paint peeled off, be careful about the following:
 - DO NOT wipe it with a hard cloth.
 - DO NOT wipe it strong.
 - DO NOT wipe it with thinner or benzine.
 - DO NOT apply any volatile substance such as insecticides to it.
 - DO NOT allow any rubber or plastic to remain in contact for a long time.

6

7

Specifications Specifications and appearance are subject to change without prior notice.

Amplifier section

OUTPUT POWER:

13 W (6.5 W + 6.5 W) at 4 Ω (10% THD)

Speakers/Impedance: 4 Ω – 16 Ω

Audio Input **LINE IN:** 500 mV/47 kΩ (at "LINE IN LVL1")
 250 mV/47 kΩ (at "LINE IN LVL2")
 125 mV/47 kΩ (at "LINE IN LVL3")

Audio Output **LINE OUT:** 1.0 Vrms (10 kΩ) (at "LINE OUT LVL1")
 2.0 Vrms (10 kΩ) (at "LINE OUT LVL2")

Tuner section

FM Tuning range: 87.5 MHz - 108.0 MHz

AM Tuning range: 530 kHz - 1 710 kHz

CD player section

Dynamic range: 88 dB

Signal-to-noise ratio: 93 dB

Wow and flutter: Immeasurable

Speakers

Speaker units: 8 cm cone x 1

Impedance: 4 Ω

Dimensions (approx.): 130 mm x 171 mm x 136 mm (W/H/D)

Mass (approx.): 0.75 kg each

Supplied Accessories

See page 2.

General

Power requirements: AC 120 V ~ , 60 Hz

Power consumption:

21.0 W (POWER ON), 3.5 W (STANDBY mode)

3.0 W or less (SAVE mode)

Mass: 1.8 kg

Dimensions (W x H x D): 270 mm x 68.5 mm x 203 mm

8



MICRO COMPONENT SYSTEM

UX-N1S

—Consists of CA-UXN1S and SP-UXN1S

UX-N1W

—Consists of CA-UXN1W and SP-UXN1W



Radio Data System

INSTRUCTIONS

GNT0065-001[B] 0106MOCMDWJSC

©2006 Victor Company of Japan, Limited

Warnings, Cautions and Others

Caution — ϕ /I button! Disconnect the mains plug to shut the power off completely. When installing the apparatus, ensure that the plug is easily accessible. The ϕ /I button in any position does not disconnect the mains line. The power can be remote controlled.

CAUTION To reduce the risk of electrical shocks, fire, etc.: 1. Do not remove screws, covers or cabinet. 2. Do not expose this appliance to rain or moisture.

CAUTION: • Do not block the ventilation openings or holes. (If the ventilation openings or holes are blocked by a newspaper or cloth, etc., the heat may not be able to get out.) • Do not place any naked flame sources, such as lighted candles, on the apparatus. • When discarding batteries, environmental problems must be considered and local rules or laws governing the disposal of these batteries must be followed strictly. • Do not expose this apparatus to rain, moisture, dripping or splashing and that no objects filled with liquids, such as vases, shall be placed on the apparatus.

IMPORTANT for the U.K.

DO NOT cut off the mains plug from this equipment. If the plug fitted is not suitable for the power points in your home or the cable is too short to reach a power point, then obtain an appropriate safety approved extension lead or consult your dealer.

BE SURE to replace the fuse only with an identical approved type, as originally fitted.

If nonetheless the mains plug is cut off ensure to remove the fuse and dispose of the plug immediately, to avoid a possible shock hazard by inadvertent connection to the mains supply.

If this product is not supplied fitted with a mains plug then follow the instructions given below:

IMPORTANT:

DO NOT make any connection to the terminal which is marked with the letter E or by the safety earth symbol or coloured green or green-and-yellow.

The wires in the mains lead on this product are coloured in accordance with the following code:

Blue: Neutral
Brown: Live

As these colours may not correspond with the coloured markings identifying the terminals in your plug proceed as follows:

The wire which is coloured blue must be connected to the terminal which is marked with the letter N or coloured black.

The wire which is coloured brown must be connected to the terminal which is marked with the letter L or coloured red.

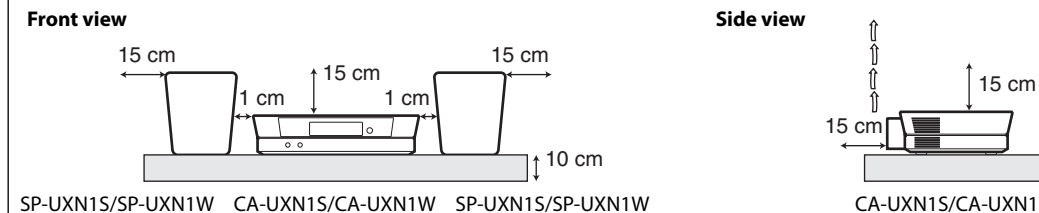
IF IN DOUBT - CONSULT A COMPETENT ELECTRICIAN.

IMPORTANT FOR LASER PRODUCTS

1. CLASS 1 LASER PRODUCT
CAUTION: Do not open the top cover. There are no user serviceable parts inside the System; leave all servicing to qualified service personnel.
2. **CAUTION:** Visible and/or invisible class 1M laser radiation when open. Do not view directly with optical instruments.

CAUTION: Proper Ventilation

To avoid risk of electric shock and fire, and to prevent damage, locate the apparatus as follows:
1. Front: No obstructions and open spacing.
2. Sides/ Top/ Back: No obstructions should be placed in the areas shown by the dimensions below.
3. Bottom: Place on the level surface. Maintain an adequate air path for ventilation by placing on a stand with a height of 10 cm or more.



SP-UXN1S/SP-UXN1W CA-UXN1S/CA-UXN1W SP-UXN1S/SP-UXN1W CA-UXN1S/CA-UXN1W

Information for Users on Disposal of Old Equipment (European Union only)
This symbol indicates that the product with this symbol should not be disposed as general household waste. If you want to dispose of this equipment, please do not use the ordinary dust bin! There is a separate collection system for these products.

The model information is located on the bottom.

Precautions

Notes on the power cord
• When you are away on travel or otherwise for an extended period of time, remove the plug from the wall outlet. A small amount of power (3.6 W) is always consumed while the power cord is connected to the wall outlet.
• When unplugging the System from the wall outlet, always pull the plug, not the power cord.
• Do not handle the power cord with wet hands.
• Disconnect the power cord before cleaning the System or moving the System.
• Do not alter, twist or pull the power cord, or put anything heavy on it, which may cause fire, electric shock, or other accidents.
• If the cord is damaged, consult a dealer and have the power cord replaced with a new one.

Avoid moisture, water, dust, and high temperatures
• Do not place the System in moist or dusty places.
• If water gets inside the System, turn off the power and remove the plug from the wall outlet, then consult your dealer. Using the System in this state may cause a fire or electrical shock.
• Do not expose the System to direct sunlight or place it near a heating device.

Notes on installation
• Select a place which is level, dry and neither too hot nor too cold between 5°C and 35°C.
• Do not install the System in a place subject to vibrations.
• Do not put heavy objects on the System.

To prevent malfunction or damage of the System
• Do not insert any metallic objects, such as wires, hairpins, coins, etc. into the System.
• Do not block the vents.

To clean the cabinet
• Use a soft cloth. Follow the relevant instructions on the use of chemically-coated cloths.
• Do not use benzene, thinner or other organic solvents and disinfectants. These may cause deformation or discoloring.

There are no user-serviceable parts inside. If anything goes wrong, unplug the power cord and consult your dealer.

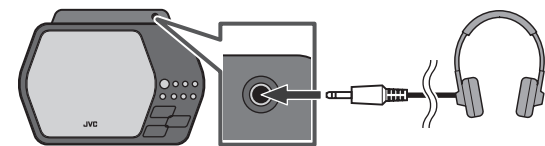
Basic and Common Operations

Operating on the System

To	Press
Turn on or off (standby) the power	ϕ /I The standby lamp on the System turns off/on.
Select a source*	CD See "Playing Back Discs" on page 4. FM/AM See "Listening to FM and AM Broadcasts" on page 5. LINE See "Connecting a Portable Audio Device" on page 6.
Adjust the volume	VOLUME + VOLUME - You can adjust the volume level from level 0 (VOL MIN) to level 31 (VOL MAX).

Using Headphones

Be sure to turn down the volume before connecting or wearing the headphones.
• Connecting the headphones will deactivate the speakers.



* You can operate the source select buttons on the System only touch lightly, because these buttons are "touch sensor panel." If you touch any one of these buttons, they lights in blue briefly.

Getting Started

Supplied Accessories

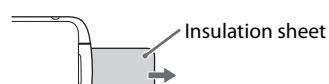
After unpacking, check to be sure that you have all the following items. The number in parentheses indicates the quantity of each piece supplied.

- Remote control (x 1)
- Lithium coin battery CR2025 (x 1) (The battery has been installed when shipped from the factory.)
- AM loop antenna (x 1)
- FM antenna (x 1)

If anything is missing, consult your dealer immediately.

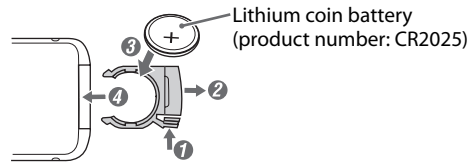
Prepare the Remote Control

When you use the remote control for the first time, pull out the insulation sheet.



Replacing the Battery in the Remote Control

Insert the battery into the remote control by matching the polarity (+ and -) correctly.



NOTES

- Store the battery in a place where children cannot reach. If a child accidentally swallows the battery, consult a doctor immediately.
- Do not recharge, short, disassemble or heat the battery or dispose of it in a fire. Doing any of these things may cause the battery to give off heat, crack, or start a fire.
- Do not leave the battery with other metallic materials. Doing this may cause the battery to give off heat, crack, or start a fire.
- When throwing away or saving the battery, wrap it in tape and insulate; otherwise, the battery may start to give off heat, crack, or start a fire.
- Do not poke the battery with tweezers or similar tools. Doing this may cause the battery to give off heat, crack, or start a fire.
- Dispose of battery in the proper manner, according to federal, state, and local regulations.

CAUTION: Danger of explosion if battery is incorrectly replaced. Replace only with the same or equivalent type.

Connections

Do not connect the AC power cord until all other connections have been made.

NOTES

• Make sure the antenna conductors do not touch any other terminals, connecting cords and power cord. Also, keep the antennas away from metallic parts of the System, connecting cords, and the AC power cord. This could cause poor reception.

• If the cords are covered with vinyl, remove the vinyl to expose the tip of the cord by twisting the vinyl.

Playing Back Discs

This System can play back the following discs—regular CD and CD-R/CD-RW (recorded either in the audio CD or MP3 format).
• When playing back the MP3 track, MP3 indicator appears on the display.

To Set a Disc

Basic Disc Operations

To	On the System	On the remote	Press
Playback the disc	CD	CD	Current track number and elapsed playing time appear on the main display. • During playback, press again to stop playing for a moment.
Stop playback	STOP	STOP	• While playback is stopped, total track number and total playing time (for MP3 disc, group number and track number) appear on the main display.
Select a track	UP	UP	Increases the track numbers.
	DOWN	DOWN	Decreases the track numbers.
Select a group (MP3 only)	REP GRP UP	REP GRP UP	Increases the group numbers while playback is stopped.
	REP GRP DOWN	REP GRP DOWN	Decreases the group numbers while playback is stopped.
Forward search / Reverse search	REP ALL UP	REP ALL UP	Fast-forwards the track by pressing briefly. To stop searching, press \triangleright /II.
	REP ALL DOWN	REP ALL DOWN	Fast-reverses the track by pressing briefly. To stop searching, press \triangleright /II.

NOTES

- If the disc cannot be read correctly (because it is scratched, for example) or an unreadable CD-R or CD-RW is loaded, playback will not start.
- If no disc is inserted, "NO DISC" appears on the main display.

Playing Repeatedly—Repeat Play

Programming the Playing Order—Program Play (except for MP3)

Operations on the Program Play Mode

To	Press
Check the programmed contents	UP or DOWN Press while playback is stopped.
To erase the last step	CANCEL
To erase the entire program	STOP Press while playback is stopped.
To exit from program play	REP MODE Press twice while playback is stopped to exit from the program play. The stored program is erased.

Playing at Random—Random Play

Operations on the Random Play Mode

To	Press
To skip a track	• \lll does not work.
To exit from random play	REP MODE Press once while playback is stopped to exit from the random play.

Listening to FM and AM Broadcasts

● Basic Tuner Operations

To	On the System	On the remote	Press
Select FM or AM			Each time you press the button, the band alternates between FM and AM. • "FM" or "AM" and selected frequency appear on the main display. • If an FM program is broadcast in stereo, the ST (stereo) indicator lights up on the display (only when the reception is good).
Select a frequency			Press and hold for more than 2 seconds. The System starts searching for stations and stops when a station of sufficient signal strength is tuned in. • Press during searching to stop. • Press repeatedly to change the frequency step by step.
Tune in to a preset station	—		Press to select a preset number for the station you store. • For presetting stations, see below.
Change the FM reception mode (When an FM stereo broadcast is hard to receive or noisy)	—		Press to improve reception. The MONO indicator appears on the display. Reception will improve though the stereo effect is lost. To restore the stereo effect, press again.

● Presetting Stations

You can preset 30 FM and 15 AM stations manually.

1 • You can also store the monaural reception mode for FM preset stations if selected.
2 Press to activate the preset number entry mode. • Finish the following process while the indication on the display is flashing.
3
4 Press to store the station.

NOTE

When you unplug the AC power cord or if a power failure occurs, the preset stations will be erased in two days.



● Receiving FM Stations with Radio Data System

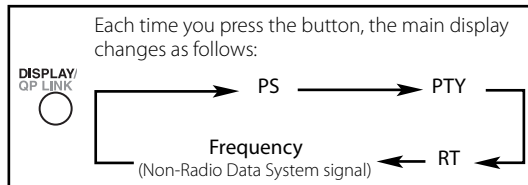
Radio Data System allows FM stations to send an additional signal along with their regular program signals. With the System, you can receive the following types of Radio Data System signals.

- PS (Program Service):** Shows commonly known station names.
- PTY (Program Type):** Shows types of broadcast programs.
- RT (Radio Text):** Shows text messages the station sends.
- Enhanced Other Networks:** Provides the information about the types of the programs broadcast by the Radio Data System stations of the different networks.

NOTE

If you want to know more about Radio Data System, visit <http://www.rds.org.uk>.

● Changing the Radio Data System Information



NOTE

If no Radio Data System signals are sent by a station, "NO PS," "NO PTY," or "NO RT" appears on the main display.

● Searching for Programs by PTY Codes (PTY Search)

You can locate a particular kind of program from the preset stations (see the left column) by specifying the PTY codes.

1	Press to enter the PTY code setting mode. "PTY" and "SELECT" appear on the main display.
2	Select a PTY code.
3	The System searches 30 preset FM stations, stops when it finds the one you have selected, and tunes in to that station.

NOTES

- To stop searching any time during search, press PTY SEARCH.
- To continue searching after it stops on an unwanted station, press PTY SEARCH while the indications on the display are flashing.
- If no program is found, "NOTFOUND" appears on the main display.

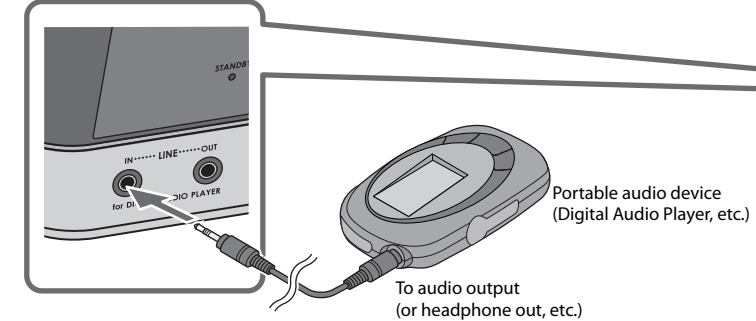
5

Connecting a Portable Audio Device

This System has LINE IN/OUT jacks to connect a portable audio device. Connect between the device and the System by using the stereo mini plug cord (not supplied).

IMPORTANT: It should be noted that it may be unlawful to re-record pre-recorded tapes, records, or discs without the consent of the owner of copyright in the sound or video recording, broadcast or cable programme and in any literary, dramatic, musical, or artistic embodied therein.

● Playing back a portable audio device



1	"LINE" appears on the main display.
2	Start playing the device connected.
3	Adjust the volume level to the level you want to listen to.

To Play Back a Portable Audio Device Easily

By using QP Link (Quick Portable Link), you can easily start playing back a portable audio device connected to the LINE IN jack.

On the remote	Press and hold for more than 2 seconds to activate QP Link. QP Link indicator appears on the display. To cancel this function, press and hold for more than 2 seconds again.
---------------	---

When QP Link is activated, connecting a portable device to the LINE IN jack and starting playback performs the following:

- While listening to another source... Changes the source to "LINE" automatically. (If you change from "LINE" to another source, QP Link will be canceled.)
- While the System is on standby... Turns on the System and changes the source to "LINE" automatically (except when the display is turned off).

NOTE

See "Learning More about This System" on page 7.

6

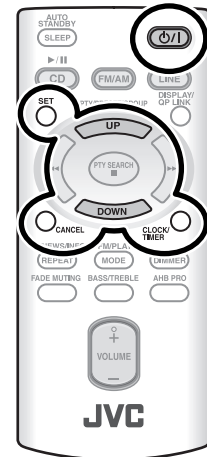
Setting the Clock and Daily Timer

● Setting the Clock

Without setting the built-in clock, you cannot use Daily Timer and Sleep Timer.

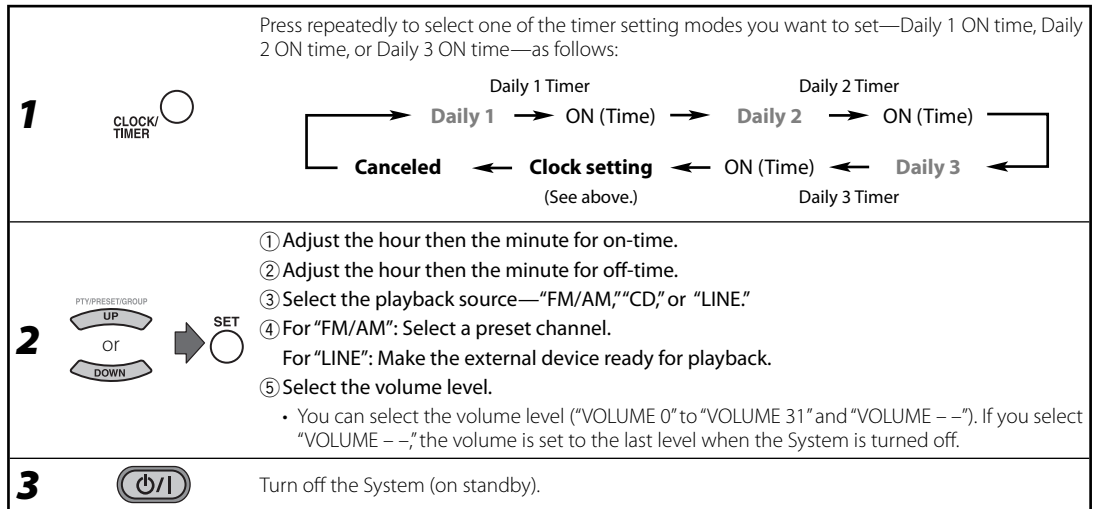
1	Press to activate the clock setting mode. • If you have already adjusted the clock before, press the button repeatedly until the clock setting mode is selected.
2	Adjust the hour, then the minute.

- To exit from the clock setting, press CLOCK/TIMER as required.
- To go back to the previous step, press CANCEL.



● Setting the Daily Timer

Using Daily Timer, you can wake up with your favorite music.
 • You can store three Daily Timer settings; however, you can activate only one of Daily Timers at the same time.



- To exit from the timer setting, press CLOCK/TIMER as required.
- To correct a misentry during the process, press CANCEL. You can return to the previous step.

To turn off the Daily Timer

1	Press repeatedly to select "Daily 1," "Daily 2," or "Daily 3."
2	

To turn on the Daily Timer again, select one of the timer settings by pressing CLOCK/TIMER, then press SET.

Learning More about This System

Basic and Common Operations (see page 3)

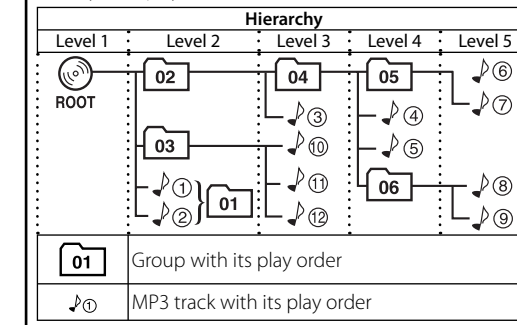
- Sound adjustments also affect the sound through the headphones.
- Sound adjustments do not affect recording to the external device.
- You can set the clock and daily timer while the SAVE mode is turned on. While setting the clock or daily timer, the display is turning on.

Playing Back Discs (see pages 4)

- This System cannot play "packet write" discs.
 - For MP3 playback...
 - MP3 discs are required a longer readout time than regular CDs. (It depends on the complexity of the group/file configuration.)
 - Some MP3 files cannot be played back and will be skipped. This result from their recording processes and conditions.
 - When making MP3 discs, use ISO 9660 Level 1 or Level 2 for the disc format.
 - This System can play back MP3 files with the extension code <.mp3> (regardless of the letter case—upper/lower).
 - It is recommended that you make each MP3 file at a sampling rate of 44.1 kHz and at bit rate of 128 kbps. This System cannot play back files made at bit rate of less than 64 kbps.
 - Playback order of MP3 tracks may be different from the one you have intended while recording. If a folder does not include MP3 tracks, they are ignored.
 - This System can recognize up to 511 tracks in a disc. Also, the System can recognize up to 150 tracks per group and up to 99 groups in a disc. (for MP3)
 - If there are any unplayable files in a folder, those files are also counted in the total file number.
 - Playable files which do not belong to any groups are handled as Group 1.

MP3 groups/tracks configuration

This System plays back MP3 tracks as follows.



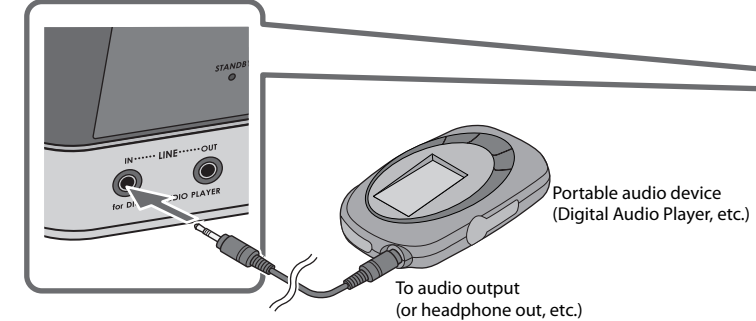
7

Connecting a Portable Audio Device

This System has LINE IN/OUT jacks to connect a portable audio device. Connect between the device and the System by using the stereo mini plug cord (not supplied).

IMPORTANT: It should be noted that it may be unlawful to re-record pre-recorded tapes, records, or discs without the consent of the owner of copyright in the sound or video recording, broadcast or cable programme and in any literary, dramatic, musical, or artistic embodied therein.

● Playing back a portable audio device



1	"LINE" appears on the main display.
2	Start playing the device connected.
3	Adjust the volume level to the level you want to listen to.

To Play Back a Portable Audio Device Easily

By using QP Link (Quick Portable Link), you can easily start playing back a portable audio device connected to the LINE IN jack.

On the remote	Press and hold for more than 2 seconds to activate QP Link. QP Link indicator appears on the display. To cancel this function, press and hold for more than 2 seconds again.
---------------	---

When QP Link is activated, connecting a portable device to the LINE IN jack and starting playback performs the following:

- While listening to another source... Changes the source to "LINE" automatically. (If you change from "LINE" to another source, QP Link will be canceled.)
- While the System is on standby... Turns on the System and changes the source to "LINE" automatically (except when the display is turned off).

NOTE

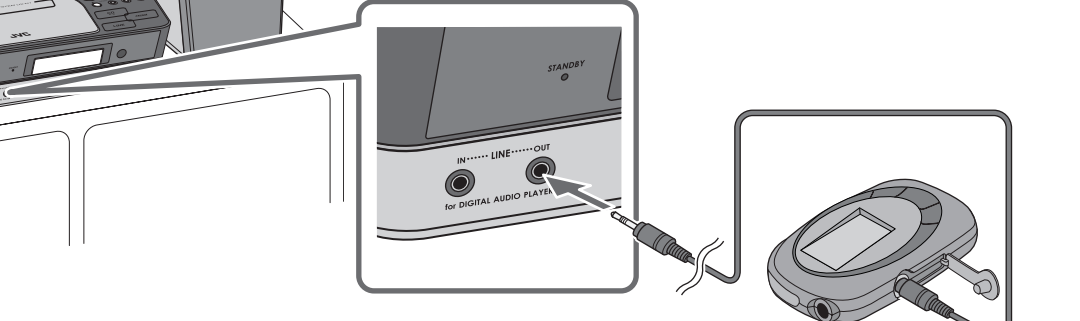
See "Learning More about This System" on page 7.

Connecting a Portable Audio Device

This System has LINE IN/OUT jacks to connect a portable audio device. Connect between the device and the System by using the stereo mini plug cord (not supplied).

IMPORTANT: It should be noted that it may be unlawful to re-record pre-recorded tapes, records, or discs without the consent of the owner of copyright in the sound or video recording, broadcast or cable programme and in any literary, dramatic, musical, or artistic embodied therein.

● Recording to a portable audio device



1	Start recording or standby recording on the device.
2	Start playing the CD or tune into the station you want to recording.

To Select the Audio Output Level

If the recorded sound on the device connected to the LINE OUT jack is too loud or too quiet, you can change the audio output level through the LINE OUT jack (without changing the volume level).

On the System	Press to change the audio output level. You can select one of two levels alternately as follows: OUT_LVL1 ↔ OUT_LVL2
---------------	---

6

Troubleshooting

If you are having a problem with your System, check this list for a possible solution before calling for service.

General

- Power does not come on.**
 - Power plug is not inserted securely. Plug in securely.
- Adjustments or settings are suddenly canceled before you finish.**
 - There is a time limit. Repeat the procedure again.

Operations are disabled.

- The built-in microprocessor may malfunction due to external electrical interference. Unplug the AC power cord and then plug it back in.

Unable to operate the System from the remote control.

- The path between the remote control and the remote sensor on the System is blocked.
- The batteries are exhausted.

No sound is heard.

- Speaker connections are incorrect or loose.
- Headphones are connected.

Radio Operations

Hard to listen to broadcasts because of noise.

- Antennas connections are incorrect or loose.
- The AM loop antenna is too close to the System.
- The FM antenna is not properly extended and positioned.

Specifications

Specifications and appearance are subject to change without prior notice.

Amplifier section

OUTPUT POWER:

- 10 W (5 W + 5 W) at 4 Ω (10% THD)
- Speakers/Impedance: 4 Ω – 16 Ω

Audio Input **LINE IN:** 500 mV/47 kΩ (at "LINE IN LVL1")
250 mV/47 kΩ (at "LINE IN LVL2")
125 mV/47 kΩ (at "LINE IN LVL3")

Audio Output **LINE OUT:** 1.0 Vrms (10 kΩ) (at "LINE OUT LVL1")
2.0 Vrms (10 kΩ) (at "LINE OUT LVL2")

Tuner section

- FM Tuning range: 87.50 MHz - 108.00 MHz
- AM (MW) Tuning range: 522 kHz - 1 629 kHz

CD player section

- Dynamic range: 88 dB
- Signal-to-noise ratio: 93 dB
- Wow and flutter: immeasurable

Disc Operations

The disc does not play.

- The disc is placed upside down. Place the disc with the label side up.
- MP3 disc is recorded with the "packet writing (UDF file)." It cannot be played.
- Check the files you want to play back.

ID3 Tag on an MP3 disc cannot be shown.

- There are two types of ID3 Tag—Version 1 and Version 2. This System can only show ID3 Tag Version 1.

MP3 groups and tracks are not played back as you expect.

- The playing order is determined when the disc was recorded. It depends on the writing application.

The disc sound is discontinuous.

- The disc is scratched or dirty.

The disc tray does not open or close.

- The AC power cord is not plugged in.

Timer Operations

Daily Timer does not work.

- The System has been turned on when the on-time comes. Timer starts working only when the System is turned off.

Maintenance

To get the best performance of the System, keep your discs and mechanism clean.

Handling discs

- Remove the disc from its case by holding it at the edge while pressing the center hole lightly.
- Do not touch the shiny surface of the disc, or bend the disc.
- Put the disc back in its case after use.
- Be careful not to scratch the surface of the disc when placing it back in its case.
- Avoid exposure to direct sunlight, temperature extremes, and moisture.

To clean the disc:

Wipe the disc with a soft cloth in a straight line from center to edge.

SAFETY INSTRUCTIONS
"SOME DOS AND DON'TS ON THE SAFE USE OF EQUIPMENT"

This equipment has been designed and manufactured to meet international safety standards but, like any electrical equipment, care must be taken if you are to obtain the best results and safety is to be assured.

 Do read the operating instructions before you attempt to use the equipment.

Do ensure that all electrical connections (including the mains plug, extension leads and interconnections between pieces of equipment) are properly made and in accordance with the manufacturer's instructions. Switch off and withdraw the mains plug when making or changing connections.

Do consult your dealer if you are ever in doubt about the installation, operation or safety of your equipment.

Do be careful with glass panels or doors on equipment.

 DON'T continue to operate the equipment if you are in any doubt about it working normally, or if it is damaged in any way—switch off, withdraw the mains plug and consult your dealer.

DON'T remove any fixed cover as this may expose dangerous voltages.

DON'T leave equipment switched on when it is unattended unless it is specifically stated that it is designed for unattended operation or has a standby mode.

Switch off using the switch on the equipment and make sure that your family know how to do this.

Special arrangements may need to be made for infirm or handicapped people.

DON'T use equipment such as personal stereos or radios so that you are distracted from the requirements of traffic safety. It is illegal to watch television whilst driving.

DON'T listen to headphones at high volume as such use can permanently damage your hearing.

DON'T obstruct the ventilation of the equipment, for example with curtains or soft furnishings.

Overheating will cause damage and shorten the life of the equipment.

DON'T use makeshift stands and NEVER fix legs with wood screws—to ensure complete safety always fit the manufacturer's approved stand or legs with the fixings provided according to the instructions.

DON'T allow electrical equipment to be exposed to rain or moisture.

ABOVE ALL
 – NEVER let anyone, especially children, push anything into holes, slots or any other opening in the case—this could result in a fatal electrical shock;

– NEVER guess or take chances with electrical equipment of any kind—it is better to be safe than sorry!

8